



HMM, NO SCENT OF NANOPRENE. THAT'S AN IMPROVEMENT.

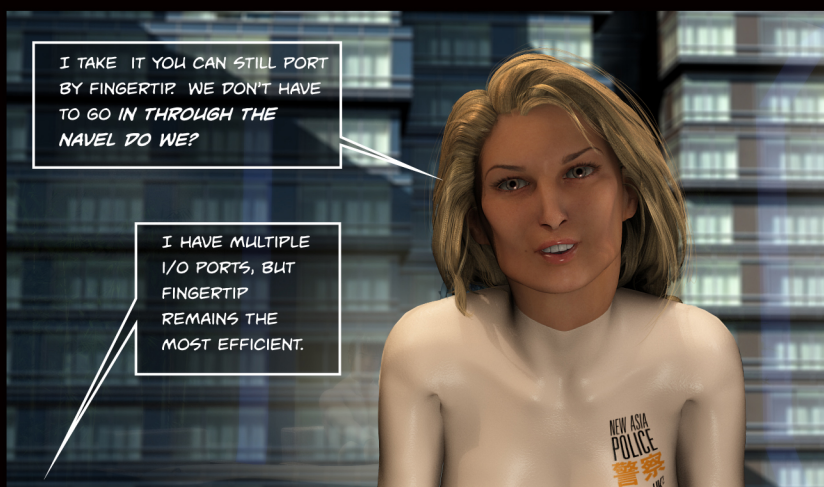
UNLIKE PREVIOUS MODELS, SUCH AS N-CLASS, MY SKIN IS ONE HUNDRED PERCENT NATURAL-- GROWN IN THE LAB FROM REPLICATED DNA.



I HAVE FORTY-THREE DIFFERENT PHEROMONES TO CHOOSE FROM IF YOU WOULD PREFER SOMETHING IN PARTICULAR. A MUSK PERHAPS?

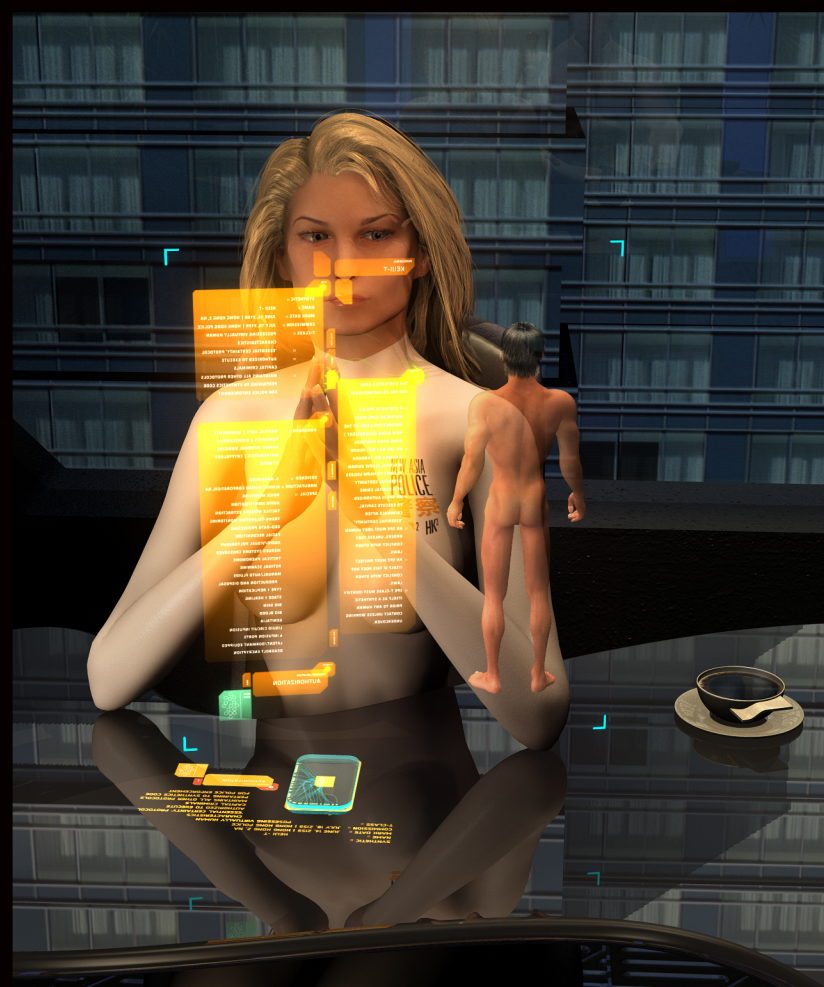
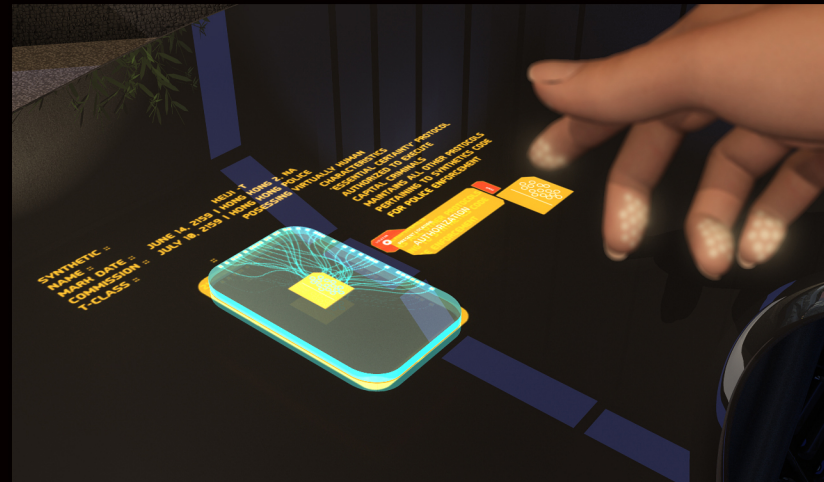


WHY DON'T YOU JUST PORT YOUR STATS HERE FOR THE TIME BEING.



I TAKE IT YOU CAN STILL PORT BY FINGERTIP. WE DON'T HAVE TO GO IN THROUGH THE NAVAL DO WE?

I HAVE MULTIPLE I/O PORTS, BUT FINGERTIP REMAINS THE MOST EFFICIENT.



PERSONNEL
KEIJI-T

SYNTHETIC ::
NAME :: KEIJI -T
MARK DATE :: JUNE 14, 2159 | HONG KONG 2, NA
COMMISSION :: JULY 10, 2159 | HONG KONG POLICE
T-CLASS :: POSSESSING VIRTUALLY HUMAN CHARACTERISTICS
:: "ESSENTIAL CERTAINTY" PROTOCOL
:: AUTHORIZED TO EXECUTE CAPITAL CRIMINALS
:: MAINTAINS ALL OTHER PROTOCOLS PERTAINING TO SYNTHETICS CODE FOR POLICE ENFORCEMENT

PROGRAMS :: MARTIAL ARTS | ARMAMENTS FORENSICS | BIOMECHANICS HUMAN INTERNAL MEDICINE MATHEMATICS | CRYPTOGRAPHY 27 MORE

DESIGNER :: S. NAKAMURA
MANUFACTURE :: ALMOST HUMAN CORPORATION, NA
SPECIAL :: AUDIO IDENTIFICATION TACTILE MEMORY EXTRACTION TRANS-TELEPATHIC MONITORING GEO-DATA PROCESSING FACIAL RECOGNITION AUDIO/VISUAL POLYGRAPHY MERGED SYSTEMS CROSSOVER TACTICAL PHEROMONE RETINAL SCANNING MANUAL/AUTO FLUIDS PRODUCTION AND DISPOSAL TYPE 1 REPLICATION

THE SYNTHETICS CODE FOR POLICE ENFORCEMENT

- || A SYNTHETIC POLICE ENFORCER (SPE) MUST ENFORCE THE LAWS OF THE NEW ASIAN GOVERNMENT | HONG KONG PROTOCOL
- || AN SPE MAY NOT INJURE A HUMAN OR, THROUGH INACTION, ALLOW HUMAN TO COME TO HARM UNLESS "ESSENTIAL CERTAINTY" OF A CAPITAL CRIME
- || AN SPE IS AUTHORIZED TO EXECUTE CAPITAL CRIMINALS AFTER "ESSENTIAL CERTAINTY"
- || AN SPE MUST OBEY HUMAN ORDERS, UNLESS THEY CONFLICT WITH OTHER LAWS.
- || AN SPE MUST PROTECT ITSELF IF THIS DOES NOT CONFLICT WITH OTHER LAWS.